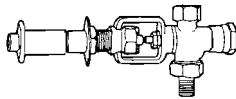
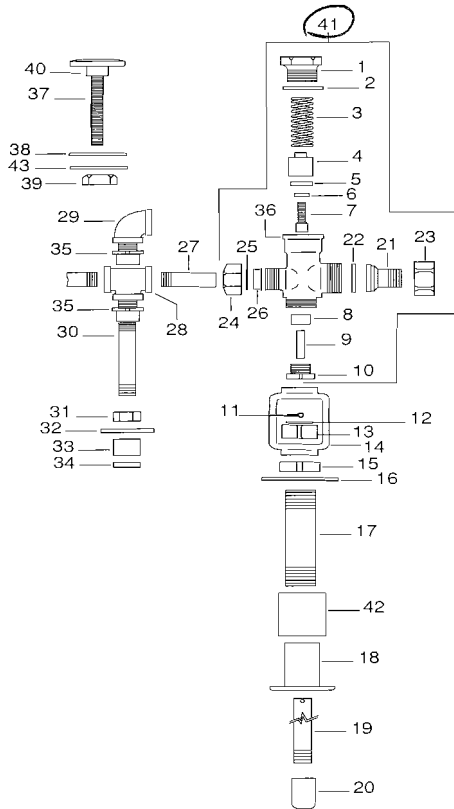


ELJER

COMMERCIAL/INSTITUTIONAL Prison Lavatory Faucet



559-0861-__ 559-0871-__



VARIABLE LENGTH PARTS

Wall Thickness	Sleeve #17	Push Rod #19	Supply Tube #30	All Thread #37
1	SLE1967P371	ROD1968M415	TUB3631P512	ROD2514P040
2	SLE1967P471	ROD1968M515	TUB3631P612	ROD2514P050
3	SLE1967P571	ROD1968M615	TUB3631P712	ROD2514P060
4	SLE1967P671	ROD1968M715	TUB3631P812	ROD2514P070
5	SLE1967P771	ROD1968M815	TUB3631P912	ROD2514P080
6	SLE1967P871	ROD1968M915	TUB3631P101	ROD2514P090
7	SLE1967P971	ROD1968M106	TUB3631P111	ROD2514P100
8	SLE1967P107	ROD1968M116	TUB3631P121	ROD2514P110
9	SLE1967P117	ROD1968M126	TUB3631P131	ROD2514P120
10	SLE1967P127	ROD1968M136	TUB3631P141	ROD2514P130
11	SLE1967P137	ROD1968M146	TUB3631P152	ROD2514P140
12	SLE1967P147	ROD1968M156	TUB3631P161	ROD2514P150

DESCRIPTION	PART#
1 Cap	CAP1623S
2 Gasket	GAS1644Z
3 Spring	SPG1643Z
4 Valve head	HED1641M
5 Seat washer	GAS1213Z
6 Collar	COL1331S
7 Valve stem	STM4548S
8 Packing	WAS1659Z
9 Valve stem	STM3815S
10 Packing nut	NUT1620S
11 Cotter pin	COP1017Z
12 Friction washer	WAS1996Z
13 Guide nut	NUT1645S
14 Yoke	YOK1619P
15 Locknut	NUT2272S

DESCRIPTION	PART#
16 Washer	WAS1350Z
17 Sleeve	SLE1967P***
18 Flange	FLG1621C
19 Push rod	ROD1968M***
20 Push button	BUT1622C
21 Tailpiece Tailpiece Sweat connection	TPL1303S TPL9065S
22 Gasket	GAS2802Z
23 Coupling nut	NUT1378S
24 Coupling nut	SW12NUT1
25 Slip joint gasket	GAS1312Z
26 Friction ring	RIG1313Z
27 Tube (3 5/8")	TUB3630P
28 Tee 1/4" IPS (two valve)	TEE2360Z
29 Elbow 1/4" IPS (single valve)	EBL2357Z
30 Supply tube	TUB3631P***

DESCRIPTION	PART#
31 Locknut	NUT1076S
32 Washer	WAS1027Z
33 Expansion gasket	PLG2277Z
34 Collar	COL1451S
35 Compression fitting	ADP9071Z
36 Valve body	BOD1618M
37 All thread rod	ROD2514P***
38 Washer	WAS1062Z
39 Hex nut	NUT2500Z
40 Bolt head	BOL3955C
41 Body assembly (IPS) Body assembly (sweat)	BODX6672 BODX7223
42 Plastic sleeve	SLE9022Z
43 Washer	V4691

*** Variable length part. See chart above.

AN **ELJER**
INDUSTRIES COMPANY