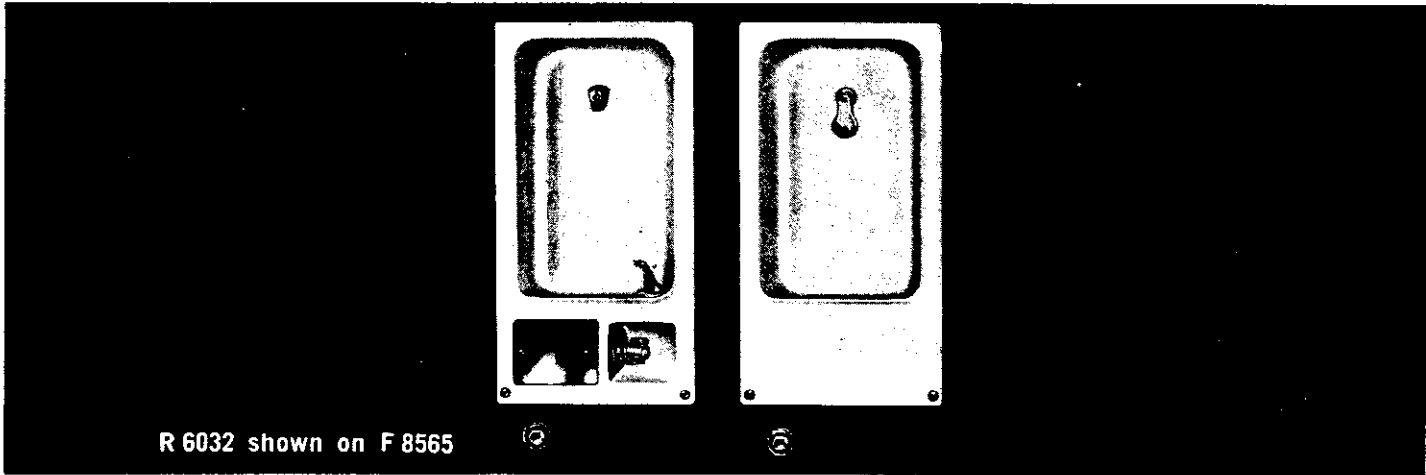
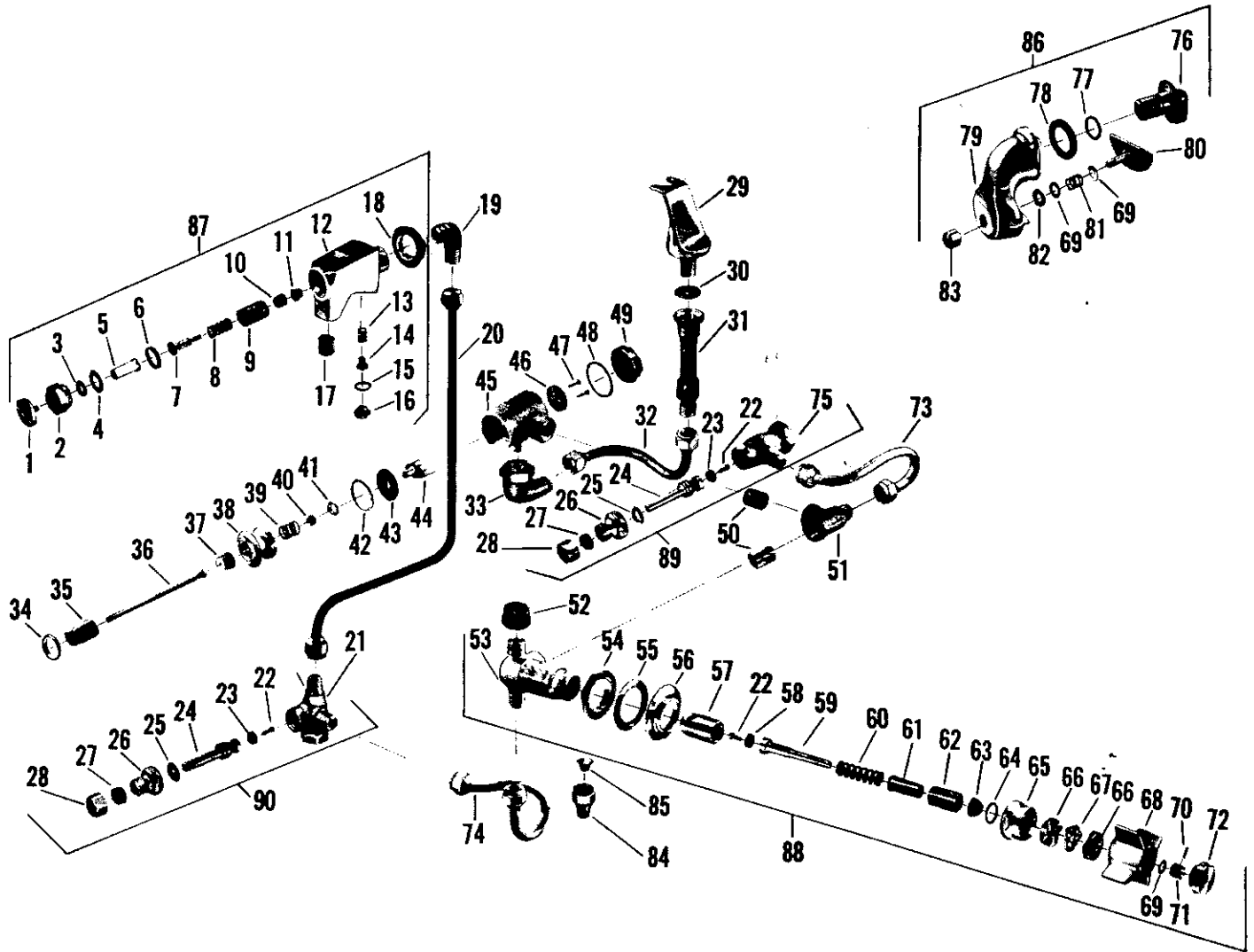


Drinking Fountain Fittings



R 6032 shown on F 8565

**Limited parts available
please call for availability**



Plumbing Parts Depot

www.ppd1.biz

no.	description	part no.	R 6032 F 8565	R 6033 F 8566	no.	description	part no.	R 6032 F 8565	R 6033 F 8566
1	Push Button	775-32			49	Cap	40356-08		
2	Packing Nut	537-12			50	Pipe Nipple	42463-08		
3	"O" Ring	888-17			51	Supply Tee	25679-08		
4	Brass Washer	21625-08			52	Valve Body Cap	1001-27		
5	Upper Stem	1006-14			53	Valve Body	34719-04		
6	Washer	1043-07			54	Lock Nut	24526-08		
7	Lower Stem	21724-08			55	Friction Washer	20829-09		
8	Spring	33-27			56	Flange	68040-02		
9	Sleeve	21389-08			57	Sleeve	21376-08		
10	Seat Washer	53-07			58	Seat Washer	1171-27		
11	Seat Washer Holder	40219-08			59	Stem w/washer & Screw	25688-08		
12	Glass Filler Body	25378-02			60	Spring	1188-07		
13	Spring	1283-27			61	Gland	33898-08		
14	Regulating Screw	34745-08			62	Spacer	40394-08		
15	Washer	1040-17			63	Stem Packing	129-07		
16	Regulating Screw Cap	37417-02			64	Cap Washer	1044-07		
17	Stream Regulator	33995-08			65	Cap	364-12		
18	Lock Nut	24409-08			66	Cam	171-37		
19	Supply Ell (Glass Filler)	25940-08			67	Ball Race	527-17		
20	Supply Tube to Glass Filler	1754-07			68	Handle	92-22		
21	Stop Body (Fountain)	25691-08			69	Friction Washer	21771-08		
22	Seat Washer Screw	159-17			70	Pin	433-07		
23	Seat Washer	441-07			71	Handle Nut	1150-07		
24	Stem w/washer & Screw	19422-08			72	Handle Cap	1312-32		
25	Cap Washer	125-07			73	Supply Tube to Cuspidor	1758-07		
26	Stuffing Box Cap	21423-08			74	Supply Tube to Self-closing Valve	1781-07		
27	Packing	1311-07			75	Stop Body (Cuspidor)	37082-08		
28	Stuffing Nut	25015-07			76	Supply Ell	25678-08		
29	Bubbler w/washer	7454-02			77	Static Seal	27-37		
30	Washer	28-17			78	Washer	67-07		
31	Socket	25680-08			79	Spreader Body	25677-02		
32	Supply Tube to Bubbler	1757-07			80	Adjusting Plate w/link S/A	13008-02		
33	Supply Ell (Pressure Regulator)	26941-08			81	Spring	46-17		
34	Lock Ring	187-27			82	Washer	1206-07		
35	Adjusting Nut	967-27			83	Adjusting Nut	32597-02		
36	Leak Tube	34189-08			84	Tube Nut	402-27		
37	Spacer	969-27			85	Seal Bonnet	421-47		
38	Regulating Cap	40358-08			86	Spreader S/A	7456-02		
39	Spring	43-27			87	Glass Filler S/A	7581-02		
40	Yoke Lock Nut	40363-08			88	Self-closing Valve S/A	7455-02		
41	Brass Washer	1456-07			89	Cuspidor Stop S/A	7459-08		
42	Brass Friction Ring	1455-07			90	Supply Stop S/A	7487-08		
43	Diaphragm	119-07							
44	Yoke	104-08							
45	Pressure Regulator Body	34710-08							
46	Yoke Disc	40359-08							
47	Yoke Screw	307-07							
48	Cap Washer	142-07							

Sub-assemblies
Pressure Regulator S/A - (Parts 33 thru 49) - #7458-08

Note - Access Plate (not illustrated) - #760-29